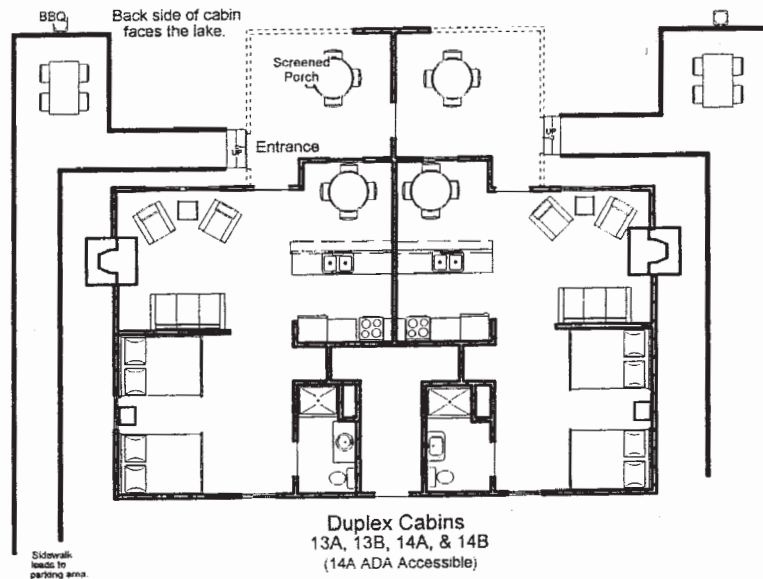


Front Entrance
Cabins 1-12

Note: Some room variation may exist from cabin to cabin



(Fishing Continued)

- No Boats or Fisherman allowed in designated swimming areas.
- No Swimming from boats, swim in designated areas only.
- No trotlines, set lines, jog fishing or commercial gears are permitted.
- No Wake/Idle speed past any buoys, and/or PVC Pipe (North End).

Ski Boats, Pleasure Boating and Personal Watercraft.

- One time boat launch fee required for duration of your stay.
- Skiing and pleasure boating hours are 9:00 AM to 7:00 PM.
- All boats (skiing and non-skiing) must follow the counter clockwise pattern.
- Counter clockwise pattern is one continuous circle, never deviating from this pattern.
- No Wake/Idle speed area past any buoys. All boats must operate at a distance of 50 yards from buoys and swim area.
- Absolutely no wake/idle speed allowed on the lake from 7:00 PM to 9:00 AM.
- While operating a ski boat on state park lake and state lakes only one person, skier or tuber per boat will be permitted to be pulled.
- No kite/parachute skiing allowed.

All Polices/Fees subject to change without notice. Please contact Park Office for specific Fees, Rules and Regulations.



Paul B. Johnson
State Park
319 Geiger Lake Road
Hattiesburg MS 39401
Phone (601) 582-7721
Fax (601) 545-5611
e-mail:

pauljohnson@mdwfp.state.ms.us
Website: www.mdwfp.com

Cabins 1, 2, & 3 are two bedrooms with two queen size beds and a queen sofa sleeper which will accommodate six (6) people. With a kitchen area, living room, TV (local service only), bathroom with shower, central air and heat, and a patio area with table and BBQ grill. These cabins are located lakefront and have a courtesy pier.

Cabins 4, 5, 6, 7, 8, 9, 10, 11, & 12 are two bedrooms with two queen size beds and a queen sofa sleeper which will accommodate six (6) people. With a kitchen area, dining area, living room, TV (local service only), bathroom with shower, central air and heat, and a patio area with table and BBQ grill. These cabins are located hillside overlooking the lake area and have courtesy piers for multiple cabin users.

Cabins 13A, 13B, 14A, & 14B are duplex style cabins. Each unit contains a kitchen/dining area, one bedroom with two full size beds and will accommodate four (4) people. Also a living room with TV (local service only), sofa, two chairs, and fireplace, bathroom with shower, central air and heat, and a screened in porch and patio area with BBQ grill. Cabins are located hillside with somewhat limited views of the lake. These cabins are also farther away from the lake of all cabins.

NOTE:
Cabin 14A is handicap Accessible.

Reservations are strongly recommended and may be made up to 24 months in advance. Minimum length stay May 20th to September 10th is 3 nights. Minimum length stay September 11th to May 19th is 2 nights. One night stay is permitted pending availability of cabin, and may be reserved on day of arrival. Maximum length of stay is two (2) weeks, and weekly extensions are at the manager's discretion.

Reservations are released at 11AM on the day immediately following the day of expected arrival, unless the park office is notified. You will be required to pay the balance due on the cabin made by reservation.

Reservations may be made by calling 1-800-GO-PARKS, visiting our web site (www.mdwfp.com) clicking onto the

park's reservation link with Reserve America or by calling the park.

Changes made to your reservation dates will include a \$10.00 service fee.

Deposits are required when the reservation is made. A deposit of 50% of the stay is required. **Deposits are transferable one (1) time WITH a \$10.00 transfer fee.**

Cabin Fee Collection

Unpaid cabin balances are due upon arrival. If other members of your party arrive before you and wish to pick-up the key, the balance still must be paid. It is your responsibility to make arrangements for payment and key pick-up for persons arriving after 5 PM.

Cabin Furnishings

The cabin and all utensils should be left clean on departure. **Furnishings should not be re-arranged in cabin or removed from cabin.** Fines may be applied for misuse or destruction of cabin and contents. Cabins are complete with: linens, pillows, blankets, bedspreads, night stands, chairs, lamps and televisions. The kitchen is furnished with: electric stove, refrigerator, microwave, drip coffee maker, basic cooking utensils*, tableware*, and cookware*.

*See following list for details.

Cabin Restrictions

- Cabins are designed for **single family**. Parties, sleep-overs (dropping off of persons), youth/adult groups, **family**

reunions are not allowed. Parties will not be tolerated in the cabin.

- **NO PETS ALLOWED IN CABINS OR CABIN AREA.**
- Parking is restricted to a maximum of **three (3) vehicles at all times.**
- The Park Manager, Assistant Manager, and Ranger has the authority to refuse rental, evict persons from the cabins who are disruptive and/or in violation of any policies as set forth by this or any public notice. It is your responsibility to know and insure your guest knowledge of such rules.
- **No refunds are granted to persons in violation of policies.**
- The person renting the cabin must be 21 years of age and is responsible for the cabin and its contents.
- **No camping units will be allowed in the cabin area.**
- Operation of off road vehicles, toys, or non registered vehicles is not allowed at any time.

Kitchen Furnishings Include:

- 6 Plates
- 6 Soup Bowls
- 6 Tumblers/Glasses
- 6 Cups/Mugs
- 6 Each - knives, forks, and spoons
- 2 Platters
- 1 Butcher Knife
- 2 Serving Spoons
- 1 Spatula/Turner
- 1 Ladle
- 1 Tongs
- 1 Can Opener
- 1 Pitcher (Gallon)
- 1 Measuring Cup

Kitchen Furnishings Continued

- 2 Vegetable Bowls
- 1 Mixing Bowl
- 2 Cooking Pots (1.5/ 2.75 Quart)
- 1 10" Skillet
- 1 Cookie Sheet
- 1 Cake Pan, 10x14
- 1 Dish Drainer

If any items are missing, please inform Park Management!

Checklist of things you may need

- Personal hygiene articles
- Favorite pillow
- Clothes for the season
- Food/Coffee
- Alarm Clock
- Games/Books
- Fishing/Skiing Equipment

TV Stations within area

- 3 ABC (Mobile, AL)
- 5 CBS
- 7 NBC (Hattiesburg, MS)
- 13 ABC (Biloxi/Gulfport, MS)
- 19 PBS
- 22 CBS (Hattiesburg, MS)
- 25 FOX (Biloxi/Gulfport, MS)

Note: We make no claim that any particular cabin has reception of any particular channel. TVs have only rabbit ears or standard antennas for reception.

Fishing Paul B. Johnson State Park. The lake is stocked with Florida Large Mouth Bass, Bluegill, Copper nose Bream, Shell cracker (Redear), Crappie and Channel Catfish.

Creel Limits

Bass	10 Per day per person
Catfish	10 Per day per person
Crappie	30 Per day per person
Bream	100 Per day per person

- **SLOT LIMIT:** All bas 18 to 22 inches must be released immediately. No more than one (1) over slot.
- All tagged fish must be released immediately.
- One time boat launch fee required for duration of your stay.
- All boats must abide by the Mississippi Boating Act of 1960.